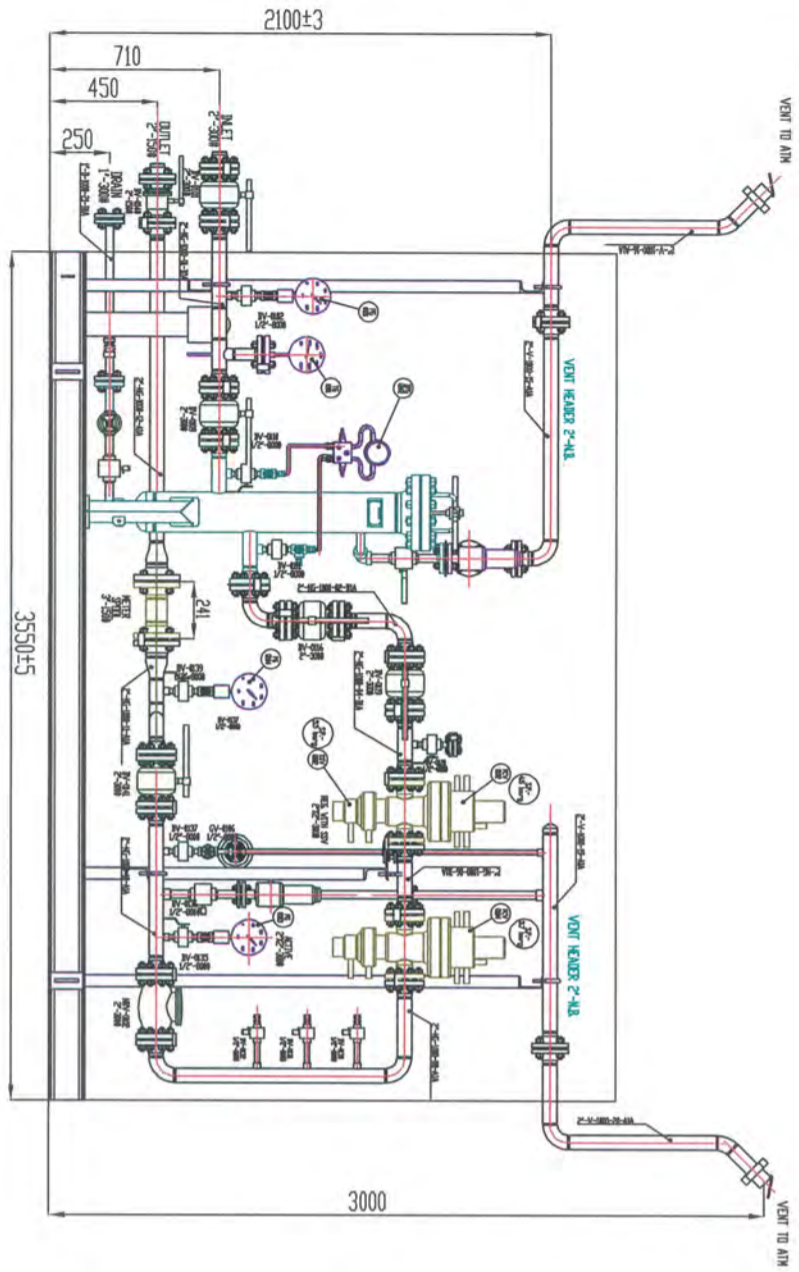
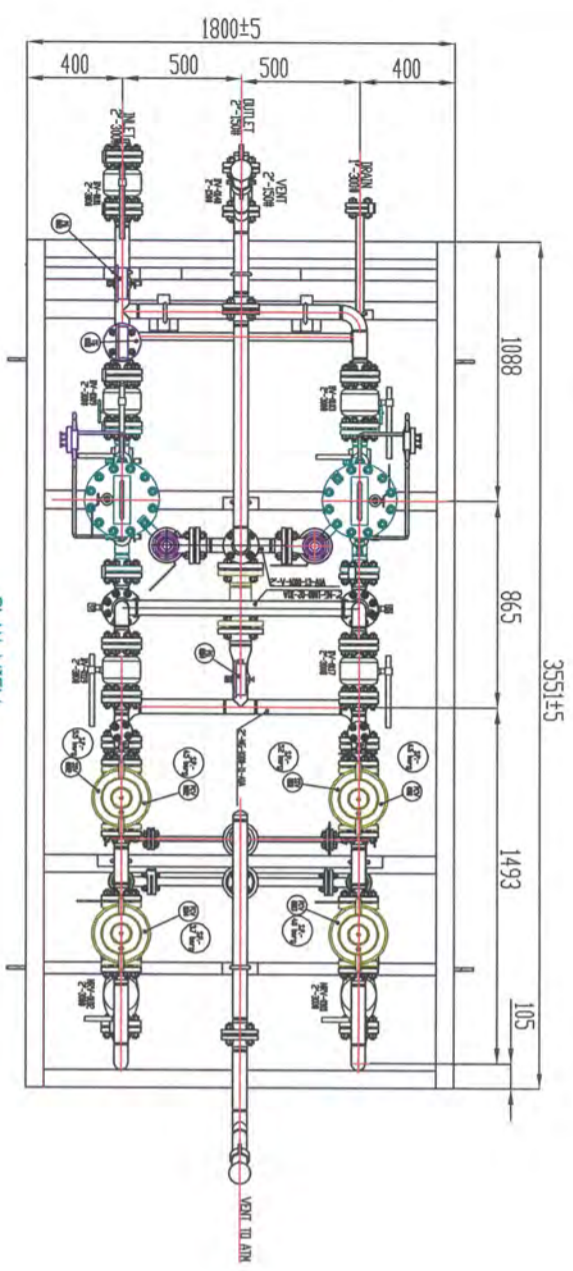


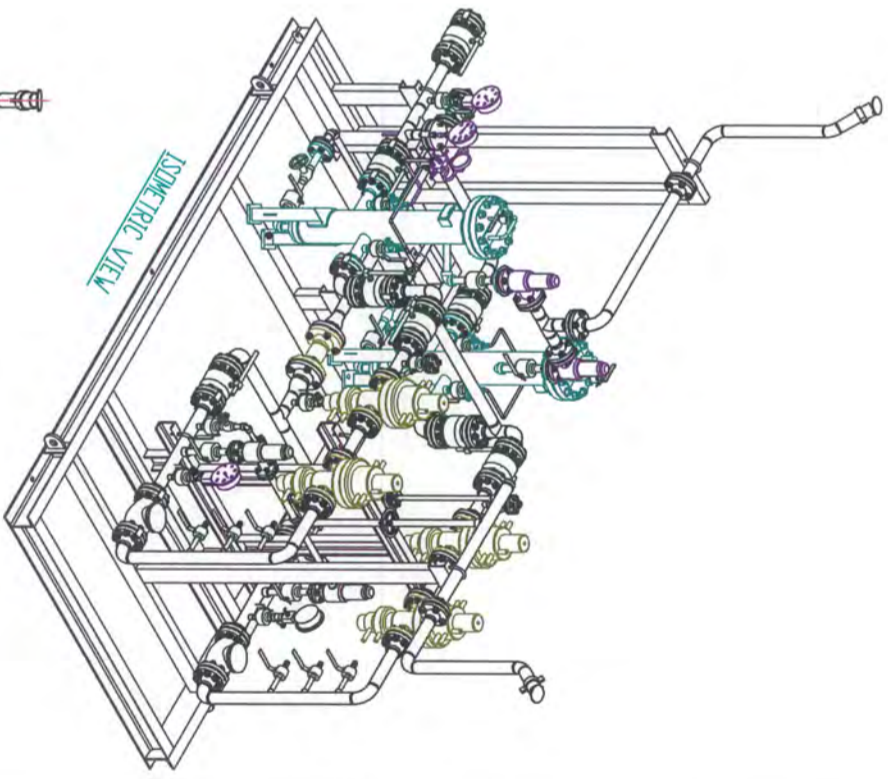
THIS DRAWING AND DESIGN IS THE PROPERTY OF G.G.L. AND MUST NOT BE COPIED OR LENT WITHOUT THEIR PERMISSION IN WRITING.



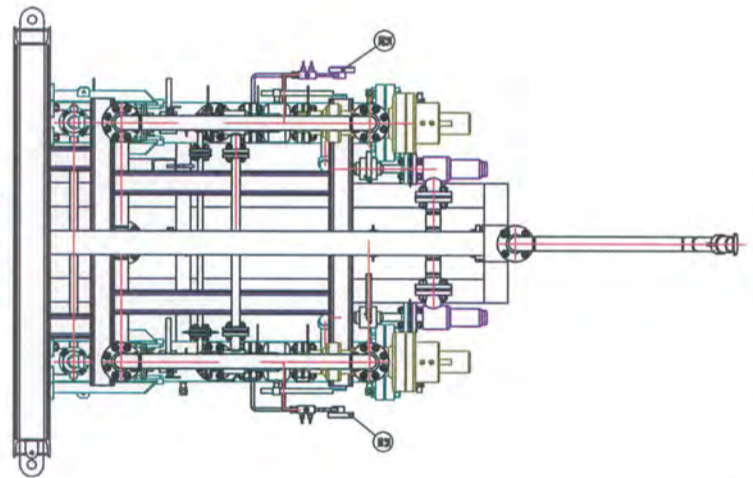
ELEVATION



PLAN VIEW



ISOMETRIC VIEW



RHS VIEW

DESIGN PARAMETERS

- FLUID SERVICE : NATURAL GAS
- FLOW : 1000 SCMH
- INLET PRESS. (TYPE-1 DRS) : 10 TO 40 barg
- INLET PRESS. (TYPE-2 DRS) : 5 TO 40 barg
- OUTLET PRESS. : 4 barg
- SET RANGE : 1.5 TO 6 barg
- INLET/OUTLET SIZE : 300#
- PRESSURE RATING (INLET/OUTLET) : 0 TO 50°C
- WORKING TEMP. : 49 barg
- DESIGN PRESSURE : -10 TO 65°C
- DESIGN TEMPERATURE : 100%
- RADIOGRAPHY : 73.5 barg
- TEST PRESSURE : 73.5 barg

NO.	DATE	REVISION	PREPARED BY	CHECKED BY	APPROVED BY
SIGN.					
NAME					
DATE	26/07/2018				
FOR	GGL				

GUJARAT GAS LIMITED

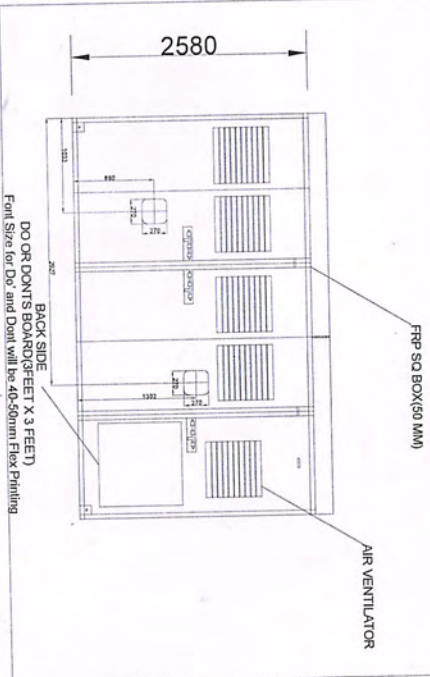
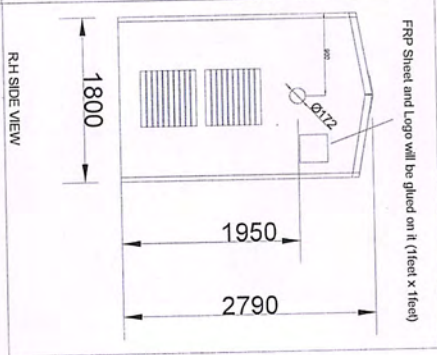
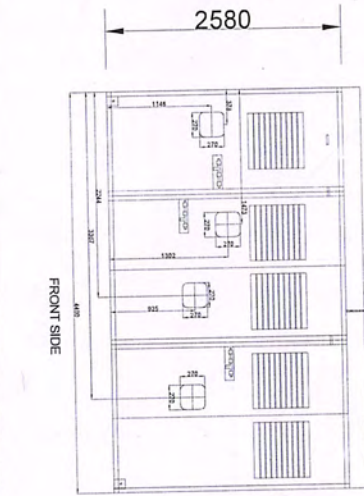
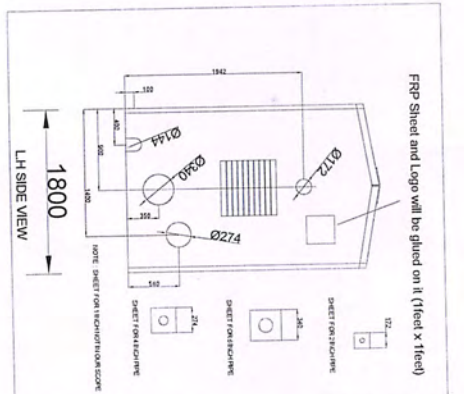
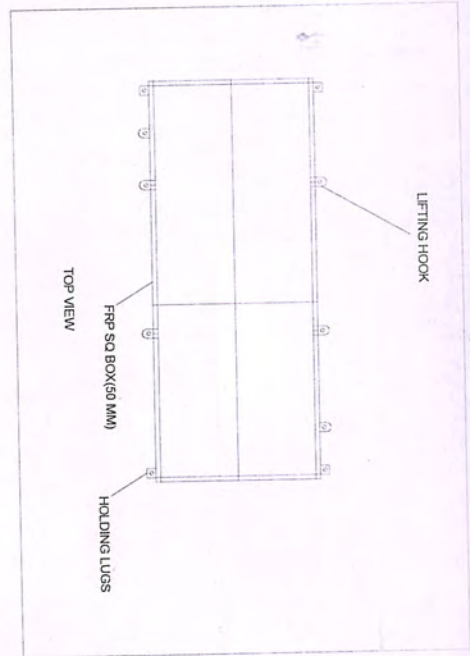
GUJARAT GAS TECHNICAL SERVICES

PROJECT NAME: CPRS /DRS-1000 SCMH

STATUS: ISSUED FOR CONSTRUCTION

TITLE: GAD OF DRS/CPRS SKID (1000 SCMH)

SCALE	SHEET	DRAWING NO.	REV.
NTS	1 OF 1	GGL-TS/CPRS DRS-1000/GAD-001	00



NOTE:-
THICKNESS 25MM = GELCOAT WITH UV 0.5MM + FRP HANDROLLING SHEET 3MM + PU FOAM 20MM + FRP HANDROLLING SHEET 2MM

TOLERANCE OF 5%+ OR - IN ALL DIMENSIONS.
ALL DIMENSION ARE IN MM.

NO.	DESCRIPTION	QTY	UNIT	REVISION
1	FRP CANOPY 4.4 MTR TYPE : 2000 SCMH	1	NO	1
2	AC/L/CANOPY/01-20/11	1	NO	1